

Physical Inventory Management Solution



Gain Inventory Transparency Across Your District in an Easy to Use, Web-Based Tool



TIPWeb-IT software puts real-time information in the hands of education leaders and building level inventory users with a district-wide view of all of your resources — what you own and where it is.

Get a complete picture of the inventory your schools, departments and buildings have, easily identify which items are distributed to individuals and rooms as well as complete asset purchase details.



Inventory Control Automation

TIPWeb-IT's mobile, physical inventory location process utilizes both barcode and RFID technology options to identify each item in your inventory through its useful life in the district.

Take control and eliminate your spreadsheets and paper files with a centralized, web-based tool you can use to record where your assets are on a daily bases, verify where they are annually, and who has devices issued to them.

There is a TIPWeb solution for every school district size, inventory control need, and budget. Let's start tracking!

Improve Data Access and Compliance

Physical inventory records and processes never replace the need for fixed asset management, endpoint management, mobile device management, and IT service management systems. School administrators may require features of all these systems to effectively maintain control and achieve their asset management goals. The TIPWeb-IT inventory control solution is intended to integrate with other enterprise systems to reduce manual data entry and break down data silos.

TIPWeb-IT software is your district's designated tool to track, manage and report on inventory critical to delivering educational environments which inspire classroom success and meet asset compliance requirements.

Tracking and Reporting

TIPWeb-IT's inventory location process utilizes barcodes to track an item through its lifecycle of use in the district. RFID technology can be deployed to speed the physical inventory taking process while barcode scanning creates a unique link for the daily tracking and managing items to a building and down to a room or individual.

Asset Lifecycle

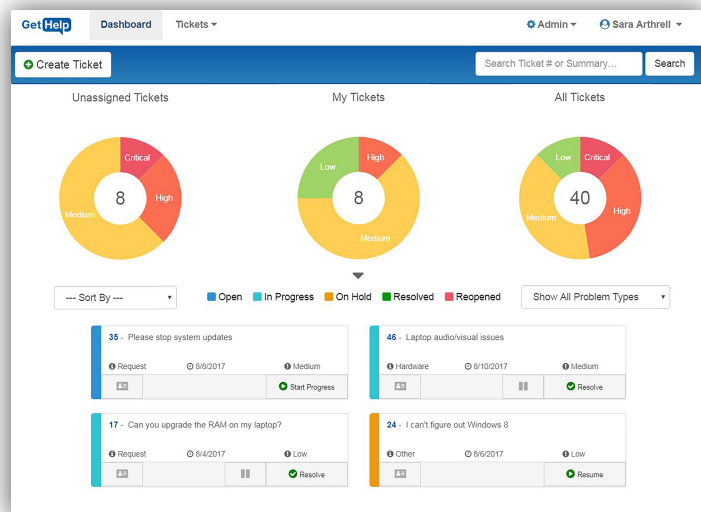


Support Your Students, Staff, and District with a K-12 Focused Help Desk Solution

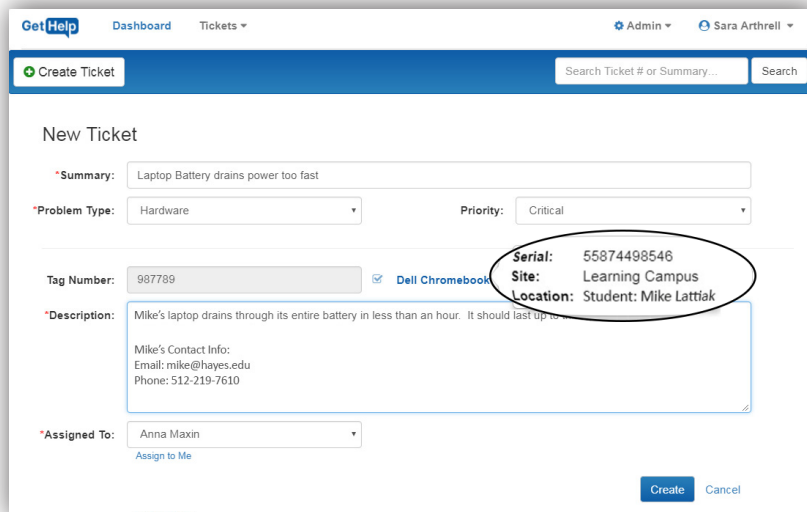


Overcoming customer support challenges in school districts continues to grow as the number of assets increase while support staff stays the same. With GetHelp, our integrated help desk and asset management software, ensure your staff remains as efficient as possible by quickly viewing details about assets, all while resolving ticket requests.

Tired of logging in and out of separate systems? Information from GetHelp will display in TIPWeb-IT to provide you with a complete overview of all tickets, current and historical, that have been opened for assets.



Ticket Management Dashboard



The screenshot shows the 'New Ticket' form in the TIPWeb-IT GetHelp Integration. It includes fields for Summary, Problem Type, Priority, Tag Number, and Description. A circled area highlights the 'Serial', 'Site', and 'Location' fields, which are populated with '55874498546', 'Learning Campus', and 'Student: Mike Lattak' respectively. The 'Assigned To' field is set to 'Anna Maxim'.

TIPWeb-IT GetHelp Integration

GetHelp Features and Functionality



TIPWeb-IT Integration

Quickly view details about your asset including the serial number and where it's located in your district by associating a tag number from TIPWeb-IT to a ticket in GetHelp.



Ticket Dashboard

See important data about all of your district's tickets from one easy-to-use dashboard and arrange your tasks by priority, problem type, or status.



Email Notifications

Communicate the overall progress of a ticket with automatic email notifications that are generated once a ticket is assigned to a technician, as well as every time a comment is added to a ticket and once it's resolved.



Cloud-Based

Access this secure, cloud-based system from any device without worrying about service interruption or application downtime.